

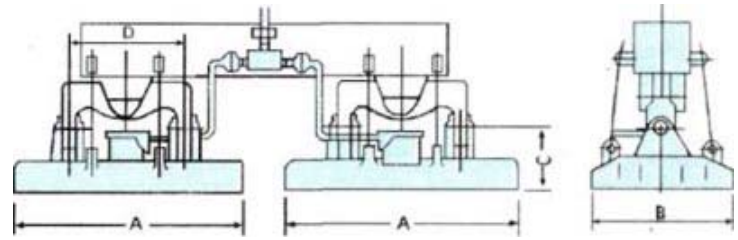


magnetonmove.com

lifting Electromagnet Model Series MW73 for Handling and Tipping Plate Blanks

Applications:

Suitable for checking the upper and lower surfaces of plate blank and performing tumbling operation when finishing, also for lifting and transporting thick plate and palte blank.when using crane of guide pillar, the electromagnet can make plate blank tumble turn 180° under the condition of lifting and transporting.



overall dimension sketch

Main technical data

DC-220V,TD-60%

Model	MW03-7540L/G	MW03-10055L/G	MW03-15065L/G	MW03-20090L/G	MW03-140110L/G	MW03-200130L/G	
overall dimension { mm)	A	750	1000	1500	1900	1400	2000
	B	400	550	650	900	1100	1300
	C	500	490	570	730	580	600
	D	420	530	700	1000	1000	1000
Mass (kq)	500	1000	1870	3300	2575	3500	
current (A)	10	11.2	19.8	27.3	17.1	34	
power(kw)	2.2	2.5	4.4	6.0	3.77	7.5	
(t) Lifting capacity of one unit	6	10	15	40	28	45	

©Copyright 2007 YUXIANG Magnetic Materials Ind. Co.,Ltd.All Rights Reserved.